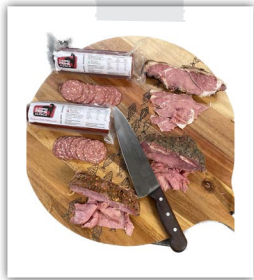
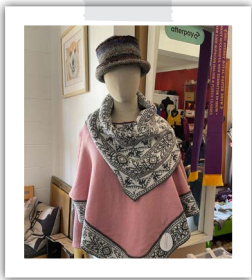
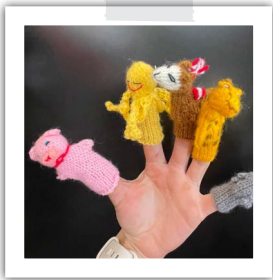


BRAINSTORMING ACTIVITY

Animal Supply Chain

Animal on a farm



Garment/End product

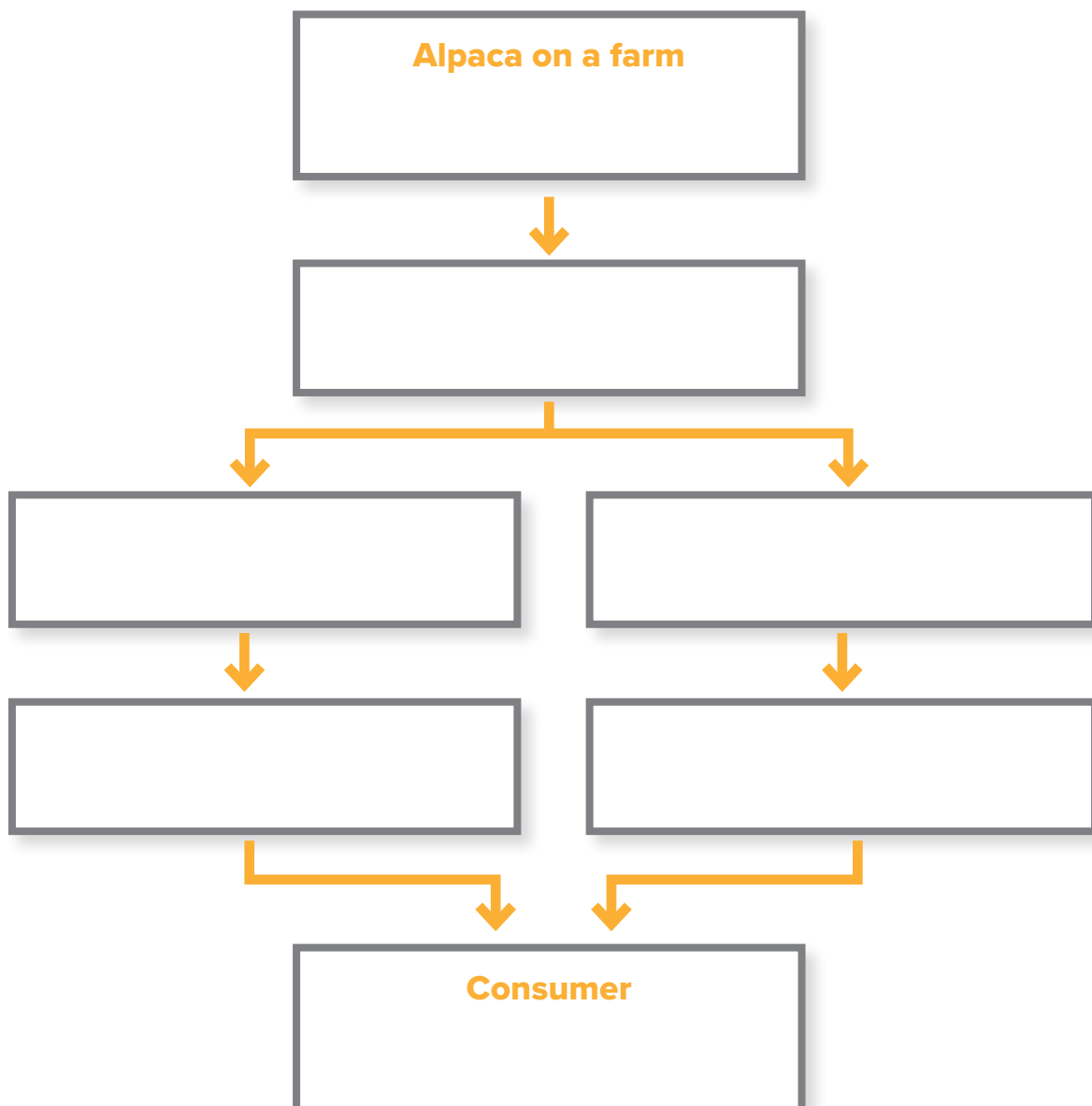
This resource has been developed by:

STIMULUS ACTIVITY

Flowchart Example

Research the marketing and supply chain for alpacas. Start with alpacas on a farm and finish with the consumer (the person who uses the end products of alpacas).

Lay your research out in a flowchart like the example below (It will not look exactly like this). As part of your research, record the name and what occurs at each process or step and the order in which they occur to produce alpaca end products.



This resource has been developed by:

RESEARCH ACTIVITY

Alpaca Fibre and Meat. The Marketing and Supply Chain

Scan the QR codes or click on the links below and on the following page to view the various source materials focused on the alpaca marketing and supply chain. Record the name and what occurs at each step and the order in which they occur to produce alpaca end products.

1.



▶ Alpaca Farm and Wool Spinning in Australia (4:33) <https://www.youtube.com/watch?v=BunhoMgSGVA>

2.



▶ Shearing and processing <https://tas.alpaca.asn.au/resources/shearing-and-processing/>

3.



▶ Why Alpaca is the Smart Future for Australia (7:06) <https://www.youtube.com/watch?v=quXELeJI7bc&t=4s>



4.



▶ Alpaca Fleece Processing <https://alpaca.asn.au/alpaca-resources/processing/>

5.



▶ Meat 'Pacas – Landline – ABC (view from 5:37-7:50) <https://www.abc.net.au/local/archives/landline/content/2013/s3812656.htm>

This resource has been developed by:

RESEARCH ACTIVITY

Alpaca Fibre and Meat. The Marketing and Supply Chain (cont.)

6.



▶ Wool Production and Processing

Note: This information refers to the processing of sheep wool. The processes used to process alpaca fibre into a luxurious end product are similar to those used for sheep wool. Shearing differs between alpacas and sheep.

<https://www.youtube.com/watch?v=ezcniHyoJ7E&t=189s>

7.



▶ Alpaca Meat

<https://alpaca.asn.au/alpaca-resources/alpaca-meat/>



This resource has been developed by:

DESIGN ACTIVITY

Paddock-to-Plate Additional Game Cards

Design cards for the alpaca 'farm-to-meat' or 'paddock-to-plate' marketing and supply chain.

Use digital technology and design software, e.g. Canva, or design cards using the template. The cards should be similar to the cards used in the supply chain flowchart. Some will be step or process cards with the name of the process and information about what occurs at that step, and others will be arrow cards.

Revisit the following links if necessary for information on alpaca meat production:

1.



▶ Meat 'Pacas – Landline – ABC

(view from 5:37-7:50)

<https://www.abc.net.au/local/archives/landline/content/2013/s3812656.htm>

2.



▶ Alpaca Meat

<https://alpaca.asn.au/alpaca-resources/alpaca-meat/>

3.

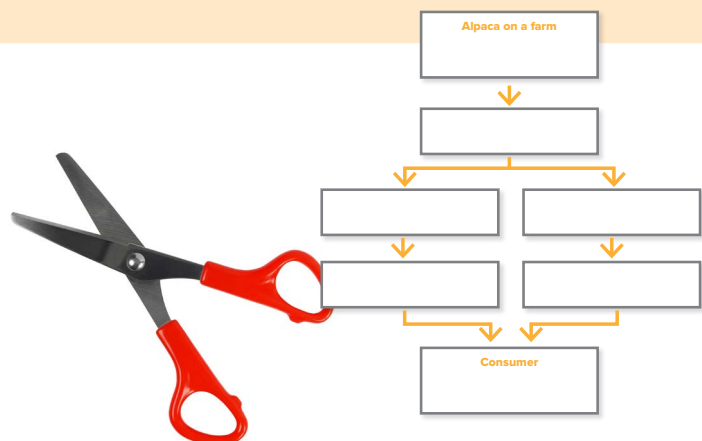


▶ Alpaca Market Assessment

(pages 5-7)

<https://agrifutures.com.au/wp-content/uploads/publications/17-010.pdf>

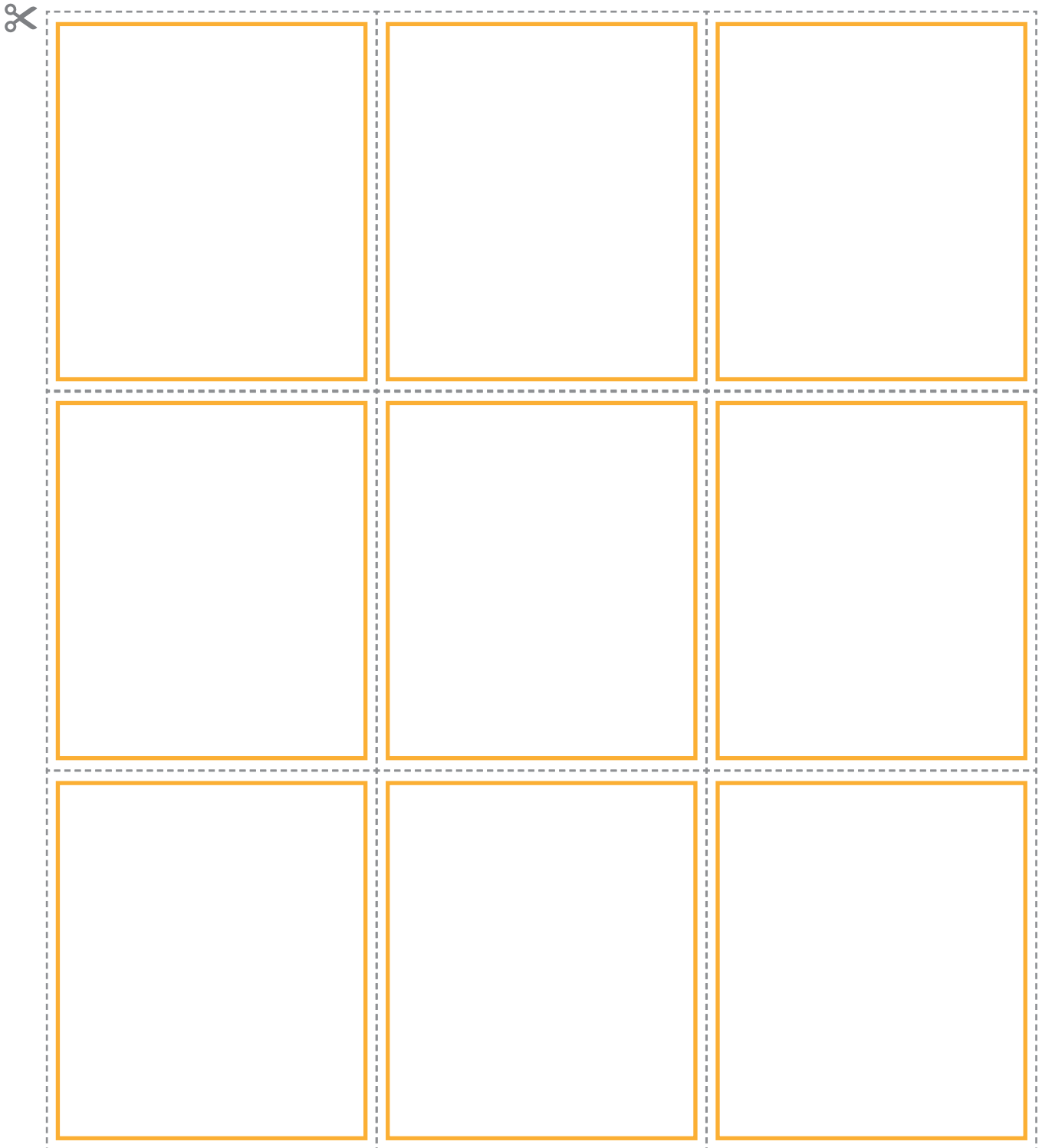
Once the cards have been designed, cut them out and add them to the supply chain flowchart.



This resource has been developed by:

DESIGN ACTIVITY

Paddock-to-Plate Additional Game Cards (cont.)



A 3x3 grid of nine empty rectangular boxes, each outlined with a solid orange border. The grid is enclosed within a dashed grey border. A scissors icon is located at the top left corner of the dashed border, indicating where to cut out the cards.

This resource has been developed by:

LITERACY ACTIVITY

Animal Welfare



Scan the QR code or click on the [link](https://alpaca.asn.au/animal-welfare/) to read the information provided by the Australian Alpaca Association on the following pages.

▶ **Animal Welfare – Australian Alpaca Association**
<https://alpaca.asn.au/animal-welfare/>

From the Australian Alpaca Association:

Australian alpaca producers depend for their livelihood on the good health and welfare of their animals. Producers recognise that animal health and animal welfare go hand-in-hand and, because of their regular interaction with their animals, are best equipped to monitor the wellbeing of their animals within their care and to summon veterinary input when needed.

Animal welfare is a key priority for the Australian Alpaca Association (AAA), and as the peak national body for the alpaca industry in Australia, they believe that the industry will benefit from a united approach to animal welfare. Individuals involved in the alpaca industry and its supply chains must take a proactive approach to ensure that a positive welfare state is achieved for each animal in their care. AAA encourages industry stakeholders to adopt this statement as their own.

Our position

Welfare is a broad term that is not easily defined, but it is a state that exists within every animal and therefore must incorporate the physical and mental well-being of the animal. Animal welfare is a responsibility that encompasses all aspects of animal wellbeing. This includes, but is not limited to adequate housing, management, nutrition, humane handling, and veterinary treatment. An animal is in a positive state of welfare when it is healthy, comfortable, well nourished, safe, and able to express natural behaviours, indicated by science-based evidence.



This resource has been developed by:

LITERACY ACTIVITY

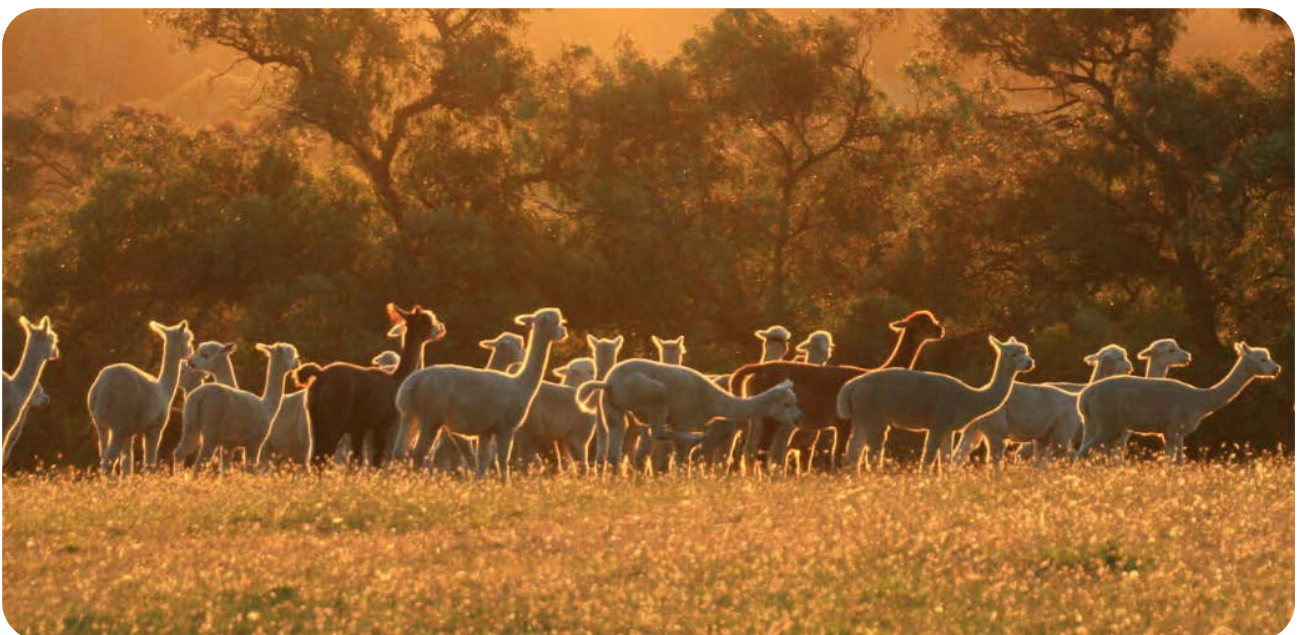
Animal Welfare (cont.)

From the Australian Alpaca Association:

Good husbandry and veterinary practices and sufficient availability of resources enable a positive welfare status to be achieved. All husbandry activities should be conducted to the highest possible welfare standards, and only be conducted when the lifelong benefit to the animal outweighs any short-term adverse welfare impacts. **It is the responsibility of every person involved in Australia's alpaca industry to achieve high animal welfare.**

AAA adopts the Five Domains of Animal Welfare Model. The model provides a foundation to guide welfare management objectives that achieve a positive welfare state for each individual animal. They support unbiased scientific, evidence-based approaches to determine clearly defined and measurable welfare states.

AAA demonstrates an ongoing commitment to the positive welfare states of animals in the alpaca industry through their policy and advocacy efforts.



This resource has been developed by:

MODELLING ACTIVITY

Alpaca Animal Welfare and Farm Design



Australian Good Meat has produced five short videos that can be viewed on Youtube that explain, in simple terms, the five freedoms of animal welfare.

Scan the QR code or click on the [link](#) to view the source material.

▶ Australian Good Meat

<https://www.youtube.com/playlist?list=PL7a3T42VoqLZckueaSa0d4LPQLXIKYA1j>



Outline the five freedoms of animal welfare.

1.

2.

3.

4.

5.

This resource has been developed by:



MODELLING ACTIVITY

Alpaca Animal Welfare and Farm Design (cont.)

Consider the five freedoms of animal welfare.

Design housing suitable for 10 alpacas on a small alpaca farm.

Use the space below to plan and list the features and requirements of the alpacas, taking into consideration the five freedoms of animal welfare.



This resource has been developed by: